

WILD PLUM LANDING

BOAT LAUNCH PROJECT

PUBLIC COMMENT PERIOD OPEN

JUNE 17 - JULY 6, 2026

COMMENTS MUST BE RECEIVED BY

END OF DAY JULY 6, 2026

SUBMIT COMMENTS

Submit written comments or ask for a hard copy of the Environmental Assessment by contacting:

Taryn Bushey

Environmental Specialist

Taryn.Bushey@cskt.org

Division of Engineering & Water Resources

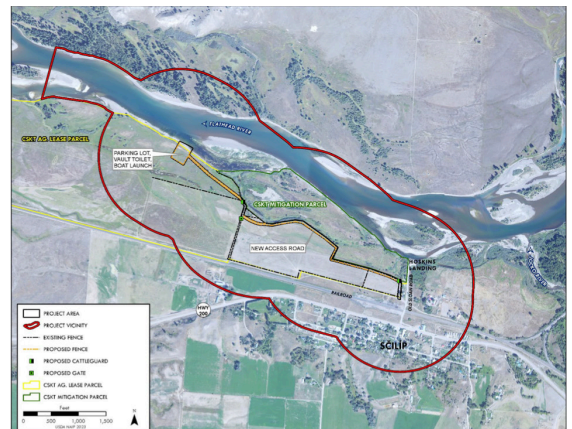
ABOUT THE PROJECT

The proposed project is to build an official boat launch at the Wild Plum Landing Location to provide access to the Flathead River for the public and administrative personnel. Amenities will include a paved parking lot and vault toilet. The project is proposed for construction in the summer of 2026. Non-Tribal members will be required to acquire a recreational permit to use the facility.

The Environmental Assessment (EA) is available for public review and comment

REVIEW THE EA

[Click Here to Review EA](#)



Project is located along the lower Flathead River at Scilip.



Natural Resources Department
Division of Engineering & Water Resources